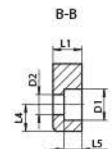
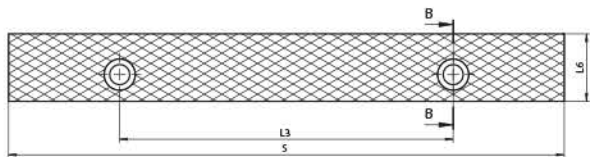
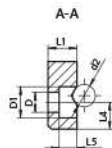
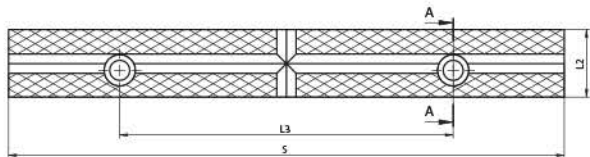
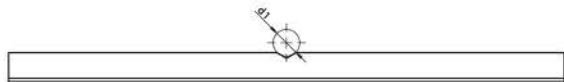


**GANASCE DI SERRAGGIO PER MORSE DE BANCO**  
MORS DE SERRAGE POUR ÉTAUX D'ÉTABLIS



Codice Articolo	S	L1	L2	L3	L4	L5	L6	D	D1	D2	Campo di serraggio Ø verticale	Campo di serraggio Ø orizzontale	Per Tipo
											Plage de serrage Ø vertical	Plage de serrage Ø horizontal	
Code Article											d1	d2	Pour Type
398210520200	80	9	20,7	50	8	6,0	20,4	7	11	6,6	3-13	3-13	1240, 1250
398210522800	100	9	20,7	60	8	6,0	20,4	7	11	6,6	3-13	3-13	1240, 1250
398210525600	125	9	21,5	60	8	6,5	21,5	7	11	7,0	4-16	3-13	1240, 1250
398210530400	150	11	25,2	100	10	8,0	25,2	9	14	9,0	4-16	4-16	1240, 1250
398210533200	175	13	30,3	100	12	8,0	30,3	9	14	9,0	4-16	4-16	1250
398210550800	175	11	25,2	10	10	8,0	25,2	9	14	9,0	4-16	4-16	1240
398210552300	200	13	30,3	150	12	8,0	30,3	9	14	9,0	4-16	4-16	1240
398210555100	250	13	30,3	150	12	8,0	30,3	9	14	9,0	4-16	4-16	1240