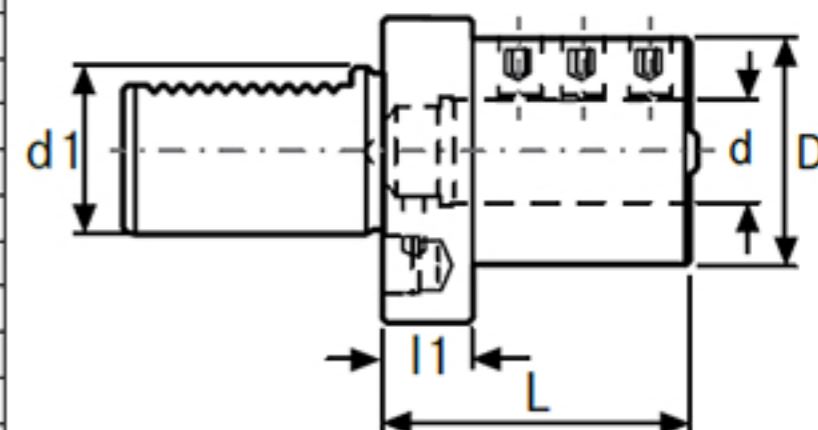


Modèle :

- Dureté de surface 58-60 HRC
- Résistance du noyau HV 950 N/mm²

- Profondeur de trempe 0,8 mm ±0,2 mm
- Entièrement bronzé et rectifié avec précision
- Alimentation en lubrifiant réfrigérant interne et externe



| d1 (mm) | d (mm) | l1 (mm) | D (mm) | L (mm) | 22778... N° de réf. | |
|---------|--------|---------|--------|--------|------------------------|---|
| 16 | 6 | 13 | 32 | 44 | 090 | ○ |
| 16 | 8 | 13 | 32 | 44 | 091 | ● |
| 16 | 10 | 13 | 32 | 44 | 092 | ● |
| 16 | 12 | - | 40 | 44 | 093 | ● |
| 16 | 16 | - | 40 | 44 | 094 | ● |
| 20 | 8 | 18 | 40 | 50 | 095 | ● |
| 20 | 10 | 18 | 40 | 50 | 096 | ● |
| 20 | 12 | 18 | 40 | 50 | 097 | ● |
| 20 | 16 | 18 | 40 | 50 | 098 | ● |
| 20 | 20 | 18 | 50 | 50 | 099 | ● |
| 20 | 25 | 18 | 50 | 60 | 100 | ● |
| 25 | 8 | 18 | 40 | 50 | 101 | ● |
| 25 | 10 | 18 | 40 | 50 | 102 | ● |
| 25 | 12 | 18 | 40 | 50 | 103 | ● |
| 25 | 16 | 18 | 40 | 50 | 104 | ● |
| 25 | 20 | 18 | 58 | 50 | 105 | ● |
| 25 | 25 | 18 | 58 | 60 | 106 | ● |
| 30 | 8 | 22 | 55 | 60 | 107 | ● |
| 30 | 10 | 22 | 55 | 60 | 108 | ● |
| 30 | 12 | 22 | 55 | 60 | 109 | ● |
| 30 | 16 | 22 | 55 | 60 | 110 | ● |
| 30 | 20 | 22 | 55 | 60 | 111 | ● |
| 30 | 25 | 22 | 55 | 60 | 112 | ● |
| 30 | 32 | 22 | 68 | 75 | 113 | ● |
| 30 | 40 | 22 | 68 | 90 | 114 | ● |
| 40 | 8 | 22 | 55 | 75 | 115 | ● |
| 40 | 10 | 22 | 55 | 75 | 116 | ● |
| 40 | 12 | 22 | 55 | 75 | 117 | ● |
| 40 | 16 | 22 | 55 | 75 | 118 | ● |
| 40 | 20 | 22 | 55 | 75 | 119 | ● |
| 40 | 25 | 22 | 55 | 75 | 120 | ● |
| 40 | 32 | 22 | 83 | 75 | 121 | ● |
| 40 | 40 | 22 | 83 | 90 | 122 | ● |
| 40 | 50 | 22 | 83 | 90 | 123 | ● |
| 50 | 12 | 30 | 68 | 90 | 124 | ● |
| 50 | 16 | 30 | 68 | 90 | 125 | ● |
| 50 | 20 | 30 | 68 | 90 | 126 | ● |
| 50 | 25 | 30 | 68 | 90 | 127 | ● |
| 50 | 32 | 30 | 68 | 90 | 128 | ● |
| 50 | 40 | 30 | 98 | 90 | 129 | ● |
| 50 | 50 | 30 | 98 | 100 | 130 | ● |