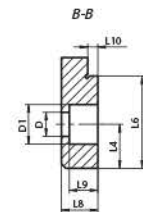
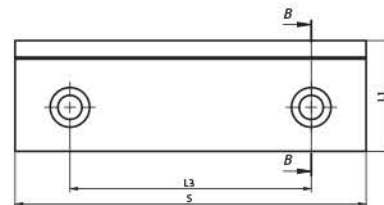
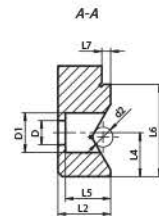
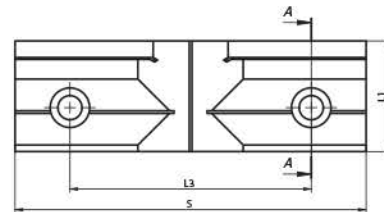
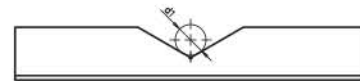


GANASCE DI SERRAGGIO PER MORSE DA MACCHINA
MORS DE SERRAGE POUR ÉTAUX DE MACHINE

- Ganasce prismatiche, prisma verticale e orizzontale, cavità longitudinale, temprate e rettificate
- Mors prismatique, prisme vertical et horizontal, évidement longitudinal, trempé et rectifié



Codice Articolo	S	L1	L2	L3	L4	L5	L6	L7	L8	L9	L10	D	D1	Campo di serraggio Ø verticale	Campo di serraggio Ø orizzontale	Per Tipo
														Plage de serrage Ø vertical	Plage de serrage Ø horizontal	Pour Type
Code Article														d1	d2	
398263310000	100	32,4	18	70	14	14,8	26	4	13,5	10,3	4,0	9	15	8-50	6-24	6512, 6537, 6530
398263320100	125	40,0	22	85	17	18,6	32	4	16,0	12,6	4,0	11	18	11-70	8-30	6512, 6537, 6530
398263330300	160	50,4	24	110	20	20,6	42	4	16,6	13,0	4,6	11	18	14-95	9-35	6512, 6537, 6515 6516, 6530
398263340500	200	63,0	30	140	28	25,0	55	4	21,0	16,0	4,0	14	20	18-123	12-44	6512, 6537, 6515 6516, 6522
398260598300	125	42,0	22	89	18	18,6	34	4	16,0	12,6	4,0	11	18	11-70	8-30	6515, 6516